

GOODYEAR WRANGLER Triple Max

**SHORTER WET BRAKING,
MORE FUN DRIVING.**

HYDROGRIP TECHNOLOGY



Superior
Braking
Performance*



Wet
Performance



Road Hazard
Resistant



**SHORTER
WET
BRAKING**



* As compared with previous generation of Wrangler tested by Goodyear Testing Division on size 235/65R17 108H XL at Luxemburg Testing Center in Oct 2015.



Free* tire replacement
in case it gets damaged
by nasty road hazards.
*Terms & conditions apply.

RANGE: MID

MAIN FEATURE: COMES WITH HYDROGRIP TECHNOLOGY FOR SUPERIOR WET BRAKING PERFORMANCE

BENEFITS:



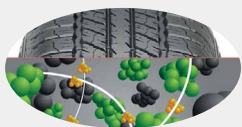
SUPERIOR BRAKING PERFORMANCE*

The HydroGrip Technology used for the Wrangler TripleMax, is made with large blocks and high number of biting edges to increase contact to road asperity. This delivers better braking and grip on wet & dry roads

卓越的制动性能*

采用了湿地抓地科技 (HydroGrip Technology), 通过大花纹块与丰富的咬合边缘, 增加轮胎与地面的接触面积, 进而提升干湿地抓地力与制动表现

* As compared with previous generation of Wrangler tested by Goodyear Testing Division on size 235/65R17 108H XL at Luxemburg Testing Center in October 2015.



WET PERFORMANCE

The HydroGrip Technology used for the Wrangler TripleMax, is made with enhanced ESBR compound for multipurpose performances to improve braking and grip on both wet and dry roads

湿地性能

采用湿地抓地科技 (HydroGrip Technology) 并加宽胎侧的结构设计, 从而优化制动力, 提升干湿地抓地力与制动表现



ROAD HAZARD RESISTANT

The Wrangler TripleMax designed with rim flange protector, which provides more material on sidewall to protect rim and tyre against road hazard

避免道路危害

保护轮胎边缘的设计, 在侧轮胎上提供更多原料以保护轮胎免受路面危害

AVAILABLE SIZES:

Size	Car Fitsments
215/65 R16 98H	Toyota Rush 1.5G(M), Toyota Rush 1.5G(A), Toyota Rush 1.5S (A), Mitsubishi ASX 2WD
215/70 R16 100H	Ford Ranger XL 2.2 4x2 Lo-Rider Manual Double Cab
245/70 R16 107H	Mitsubishi Pajero Sport 2.5GL, Mitsubishi Triton MT, Mitsubishi Triton VGT MT, Mitsubishi Triton VGT AT, Isuzu D-Max Single Cab 2.5L 4x4 MT, Isuzu D-Max Double Cab 2.5L 4x2MT Hi-Ride, Isuzu D-Max Double Cab 2.5L 4x4 MT-L, Isuzu MU-X 2.5L 4x2 AT
265/70 R16 112H	Toyota Land Cruiser, Toyota Land Cruiser Prado, Nissan Frontier, Nissan NP 300, Mitsubishi Triton
215/60 R17 96H	Toyota Alphard 2.4G, Toyota Alphard 3.5G, Mitsubishi ASX 4WD
225/60 R17 99U	Subaru Forester 2.0i-L, Hyundai Tucson 2.0L Elegance, Hyundai Tucson 2.0L Sport, Renault Koleos 2.5
225/65 R17 102V	Honda CRV 2.0 2WD i-Vtec, Honda CRV 2.0 4WD i-Vtec, Nissan X-Trail 2.0 2WD, Nissan X-Trail 2.5 4WD, Mazda CX5 2.0L and 2.5L, Lexus NX 200t, Suzuki Grand Vitara 2.0 A/T
235/65 R17 108V XL	Volvo XC60 2.0 T5 Drive-E, Land Rover Freelander 2.2 SD4 S, Land Rover Freelander 2.0 Si4 S
265/65 R17 112H	Toyota Fortuner 2.5G, Toyota Fortuner 2.5G TRD Sportivo, Toyota Fortuner 2.7V, Toyota Fortuner 2.7V TRD Sportivo, Toyota Hilux Double Cab 3.0G (A), Toyota Hilux Cab 3.0G (A) TRD Sportivo, Mitsubishi Pajero Sport 2.5 VGT, Mazda BT-50 2.2MT High Spec, Mazda BT-5 2.2 AT High Spec, Mazda BT-50 3.2 AT High Spec, Ford XLT 3.2 4x4 (M)
245/65 R17 111H XL	Mitsubishi Triton VGT Adventure
255/65 R17 110H	Isuzu D-Max Double Cab 2.5L 4x4 MT, Isuzu D-Max Double Cab 2.5L 4x4 AT, Isuzu D-Max V Cross 3.0L 4x4 MT, Isuzu MU-X 2.5L 4x4 AT, Chevrolet Colorado Muscle Power (M), Chevrolet Colorado Muscle Power (A)
235/55 R18 104V XL	Kia Sportage 2.2 2WD, Kia Sportage 2.04WD, Kia Sorento 2.4, Chevrolet Captiva LT 2.4, Chevrolet Captiva LT 2.0, Lexus NX 200t F Sport